



**CCIH**

Christian Connections  
for International Health

# **Faith-based Organizations Adapting to a Warming World: Community Approaches to a Global Crisis**

**13 December 2022**



# Moderator



**Beth Good** is an Assistant Professor and Program Director for Eastern Mennonite University's Master of Science in Nursing program. Beth earned her PhD in Nursing Science and Research and a Master's in Public Health Nursing from Widener University. Beth has extensive experience working internationally with Mennonite Central Committee as the Global Health Coordinator as well as other international assignments. She and her family have lived in Kinshasa, DRC, Kenya, and Bukavu. Beth's experience is in the areas of public health in vulnerable settings, HIV/AIDS education, trauma healing, sexual gender-based violence, and intercultural awareness and humility.

**Capacity Building**



**Networking**



**Fellowship**



**Advocacy**



**Inspired by Faith.  
Committed to evidence-based practice.**

# **Christian Connections for International Health**

**[www.ccih.org](http://www.ccih.org)**

# Housekeeping

- Put your questions in the chat box or raise hand during the open Q&A time
- This webinar is being recorded and will be posted on the CCIH YouTube Channel and posted on the CCIH website at [www.ccih.org](http://www.ccih.org) > Events > Webinar Recordings.

# Video



**Katharine Hayhoe** is a Paul Whitfield Horn Distinguished Professor and Endowed Chair in Public Policy and Public Law in the Public Administration program of the Department of Political Science at Texas Tech University. She is also the Chief Scientist for the global conservation organization, The Nature Conservancy. Professor Hayhoe's research focuses on developing and applying high-resolution climate projections to evaluate the future impacts of climate change on human society and the natural environment.

Video: [Christians Climate and Culture with Katharine Hayhoe](#)

# Our Panel Today



**Dan Irvine** is Haiti Country Director for World Hope International, providing leadership to programs focused on health, education and child protection. He is also an ordained minister in the Wesleyan Church and has more than 40 years of ministry experience as a Pastor, Christian Educator, Missionary, and Administrator. He earned a MA in Ministry from Indiana Wesleyan University, a graduate certificate in International Family and Community Development, and is currently pursuing Ph.D. studies at Columbia International University.



# Haiti

- International Boundary
- Department Boundary
- Road
- River

- ★ National Capital
- ◉ Department Capital
- City or Town

0 25 50 KM  
0 25 50 Miles


© 2007 Geology.com

## Context

Caribbean Sea

DOMINICAN REPUBLIC





## Direct Impacts

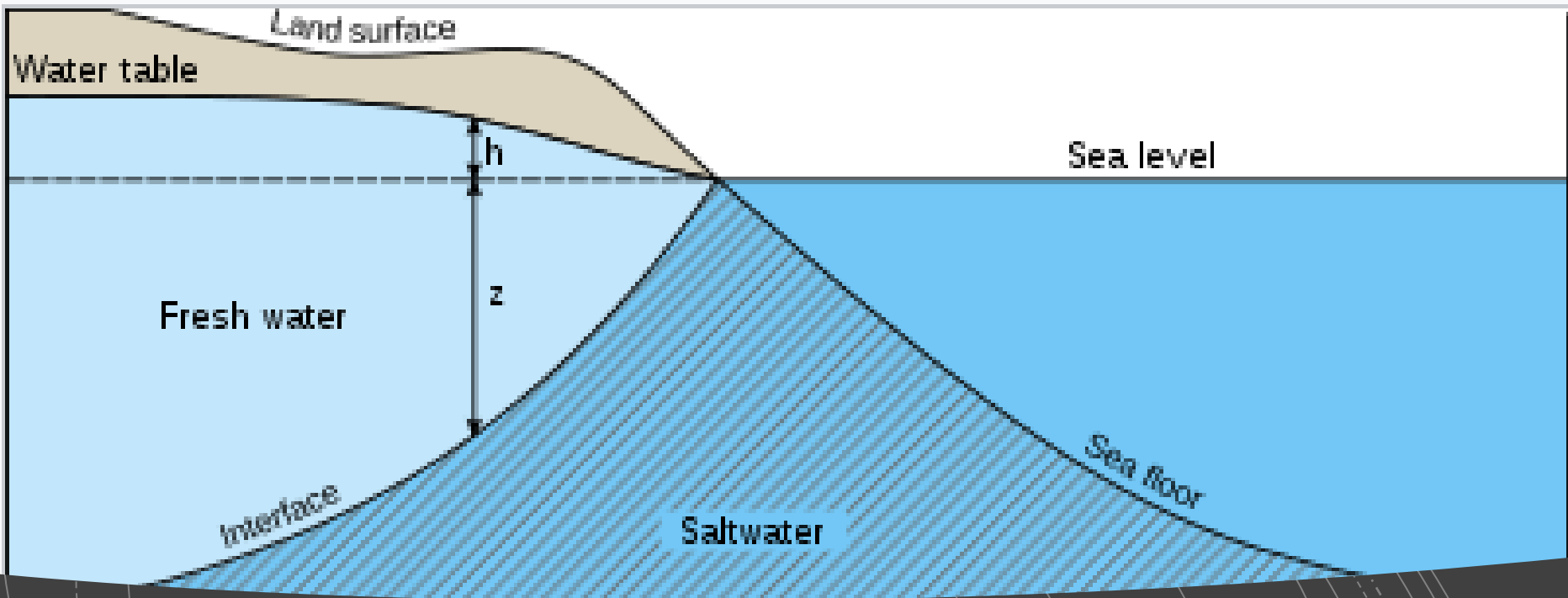
- Food —
- Water
- Safety
- Environment
- Disease



## Weather extremes

- Disruption of rain and weather cycles
- Affecting food supply
- Flooding on “the saline”





## Rising ocean levels

- Barlow, Paul M. (2003). "[Ground Water in Freshwater-Saltwater Environments of the Atlantic Coast](#)". [USGS](#).
- Saltwater intrusion. (2022, November 4). In *Wikipedia*. [https://en.wikipedia.org/wiki/Saltwater\\_intrusion](https://en.wikipedia.org/wiki/Saltwater_intrusion)

# Good news in the form of .....

- **Community Health Engagement**

- Local community meetings
- Subjects: Health ,nutrition, family dynamics, agriculture, spiritual life
- Low cost , flexible , volunteer leaders

## **Capital Projects to reduce vulnerability**

Example of first project

Addressing water vulnerability

Solar desal plant in collaboration with Give Power

# Carbon footprint

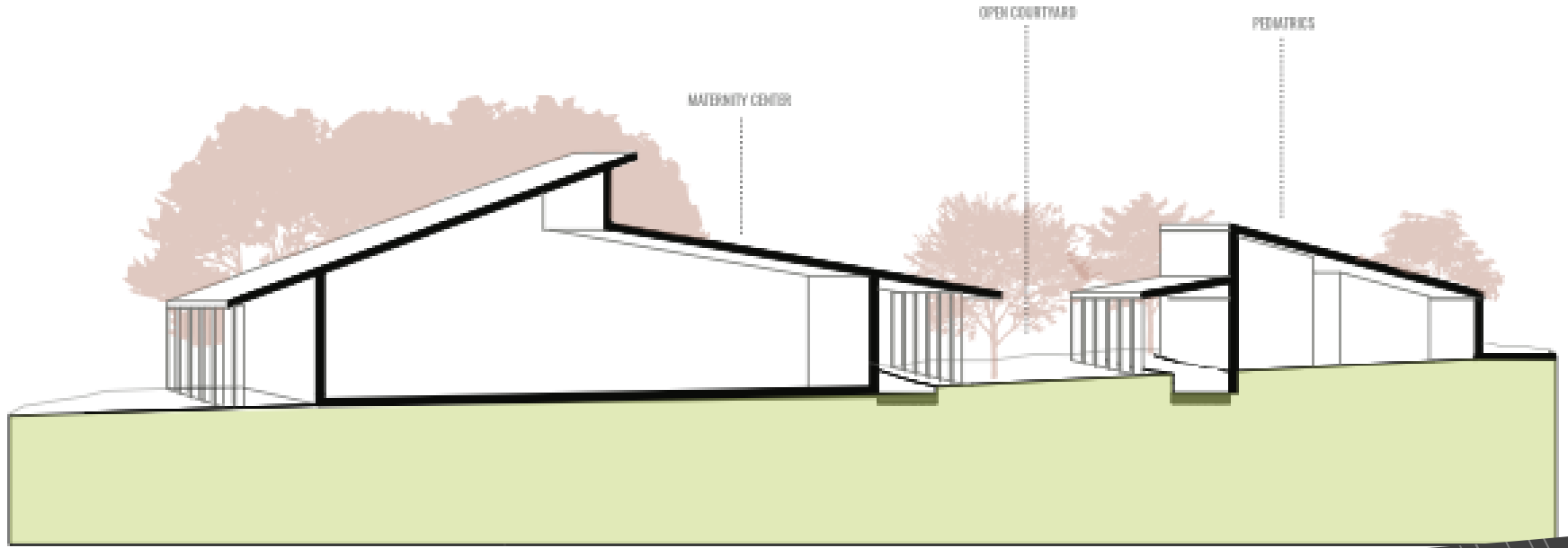
---



This Photo by Unknown Author is licensed under CC BY



the location of the new wards we create a courtyard for visiting families to enjoy while they tend to their loved ones in the hospital. The space is intended to be shaded by large trees and accessible a covered arcade that runs the length of the buildings.



## Heat mitigation by design



# Our Panel Today



**Naveed Khurram** is the Administrator of Kunri Christian Hospital (Rural Health Care Project), which is part of the Diocese of Hyderabad Church of Pakistan. Naveed has served at Kunri Christian Hospital since 2007, prioritizing climate mitigation and adaptation measures. The vision of Kunri is the provision of holistic healthcare services to all. The hospital works to reach the most vulnerable communities impacted by disasters such as floods, droughts, and intense heat waves.